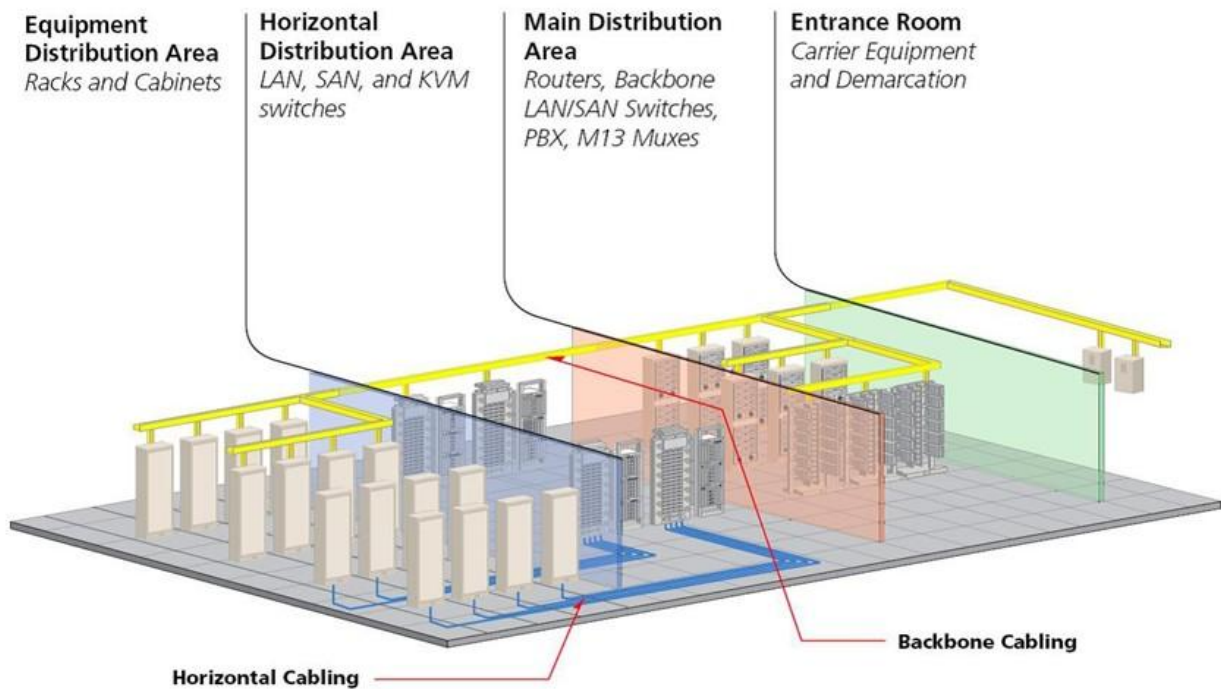


# Cabling Topology

The basic cabling elements of the data center star topology should include:

- Horizontal cabling
- Backbone cabling
- Equipment cabling



## Horizontal cabling

The system of cabling that connects telecommunications rooms to individual outlets or work areas on the floor.

In premise cabling, any cabling that is used to connect a floor's wiring closet to wall plates in the work areas to provide a local area network (LAN) drops for connecting users' computers to the network.

## Backbone cabling

Backbone cabling systems provide necessary interconnects at the datacenter facility, providing the vital cabling foundation to datacenter stay connects with inside and outside of facility.

It Connects between MDA, IDA, HDA room and entrance section in the datacenter, Backbone cabling consists of the transmission media, main and intermediate cross-connects and terminations at these locations.

The presence of an HDA or IDA is not mandatory. Cabling extending from the TIA HC in the HDA, IDA, or MDA to the mechanical termination in the EDA is considered horizontal cabling. Sufficient horizontal cable slack should be considered allowing migration to a cross-connect in the HDA, IDA, or MDA. Backbone cabling cross-connects may be in TRs, computer rooms, MDAs, IDAs, HDAs, or at entrance rooms.

## **Equipment cabling**

Equipment cabling connects the cable from one device to another device and this type of cabling occurs inside the cabinet and rack.

---

Revision #1

Created 6 October 2025 08:41:27 by RISA

Updated 6 October 2025 08:44:34 by RISA